



**Southwest California Synod**  
**Evangelical Lutheran Church in America**  
God's work. Our hands.

*Always proclaiming God's saving Gospel,  
living out Christ's Great Commission, and serving all in response to God's love—  
—through care, advocacy, reconciliation and solidarity with those in need—  
the Southwest California Synod will, for the next five years,  
direct its work toward the following mission goals:*

- Communicating the Gospel message powerfully and clearly
  - Shaping the faith of the baptized through education
- Fostering congregations in becoming healthy communities
  - Creating opportunities for its rostered leaders to thrive
- Developing at least four geographical area ministry strategies
- Establishing clusters of congregations around similar ministries

January, 2015



# GLOSSARY OF ELCA ACRONYMS AND TERMS

## GENERAL ELCA TERMS

**ELCA Plenary** – Evangelical Lutheran Church in America (Denominational name).

**Region 2** – One of 9 regions of the ELCA composed of 5 synods (Southwest California, Pacifica, Sierra Pacific, Rocky Mountain, and Grand Canyon).

**Churchwide** – A term referring to the entire ELCA.

**Churchwide Offices** – ELCA denominational headquarters in Chicago.

**Luther Center** – The name for the facility in Chicago that houses the ELCA Churchwide offices.

**Presiding Bishop** – The elected clergy responsible for the entire ELCA Churchwide; currently serving is Presiding Bishop Mark Hanson.

## SYNOD

**Synod** – A geographical group of congregations that are a part of the ELCA. There are 65 synods in the ELCA.

**SoCalSynod** – Southwest California Synod ([www.socalsynod.org](http://www.socalsynod.org))

**Conference** – A geographical group of congregations of the synod:

1. **Central Coast** – 9 congregations located between Solvang and Templeton;
2. **Channel Islands** – 14 Congregations between Goleta and Agoura Hills;
3. **Foothill** – 15 congregations in the Foothills area between Glendale and Monrovia;
4. **Greater Long Beach** – 13 congregations in Long Beach and surrounding communities;
5. **LA Metro** – 19 congregations including the city of LA, and Santa Monica area;
6. **San Gabriel Valley** – 13 congregations in the San Gabriel Valley;
7. **South Bay** – 15 congregations within a fifteen-mile distance from the coast;
8. **Tehachapi** – 7 congregations in the Lancaster/Palmdale/Bakersfield areas;
9. **Twin Valleys** – 20 congregations in the San Fernando and Santa Clarita Valleys.

**Equipping Leaders for Mission (ELM)** – School of Lay Ministry designed to educate and equip lay people for enhanced participation in congregational and synodical life through personal spiritual development, biblical enhancement and life-long learning. ELM is a two-year program.

## SYNOD LEADERSHIP

**Synod Council** – 25-member elected board of directors of the synod.

**Bishop** – The clergy elected by the Synod Assembly to lead a synod of the ELCA; currently serving the Southwest California Synod is Bishop Dean W. Nelson.

**Vice-President** – An elected lay volunteer.

**Executive Committee** – 4 officers and 4 at-large members of the Synod Council, appointed by the Council.

**Mission Teams** – Five (5) Committees of the Synod:

1. **Mission Team for Evangelical Outreach** helps the Synod and its congregations implement the Synod's Mission Goals of "intentional outreach to the diverse populations of our Synod", "the development of new congregations, the transformation of congregations", and "the re-rooting of congregations in their neighborhoods". This team assists in implementation of the ELCA's Evangelism Strategy as well as assists in implementation of ethnic strategies adopted by the Synod.

2. **Mission Team for Rostered Leadership** provides opportunities to identify and support clergy and lay rostered ministers. This team promotes participation in Conference Collegiums and Continuing Education and relates to the Candidacy Committee assisting those preparing for ministry including those enrolled in the TEEM program and First Call Theological Education.
3. **Mission Team for Lay Leadership** provides opportunities to identify and support lay leaders as they witness and serve in their congregation and in daily life. This team helps the Synod and its congregations to implement the Mission Goals of the Synod of “intentional outreach to children, youth and young adults” and provides oversight and support for the School for Equipping Leaders for Mission” (ELM). This Team relates to the Lutheran Youth Organization; the Young Adult Task Force; the Synodical Women’s Organization; Men’s Ministry; Lutheran Retreats, Camps and Conferences (LRCC); and Campus Ministries.
4. **Mission Team for Justice** helps the Synod and its congregations, institutions and agencies address issues of justice in public life from Christian perspectives while being guided in their public witness by the Social Statements of the ELCA. This team works closely with the Lutheran Office of Public Policy and the California Council of Churches in matters of advocacy.
5. **Mission Team for Global Partnerships** helps the Synod and its congregations establish connections with the global Christian community by supporting growth in Companion Synod relationships, creating partnerships with congregations in other parts of the world, learning about issues of globalization, and by lifting up opportunities to accompany global churches in their mission. We have 3 Companion Synods in Hong Kong, Ethiopia and El Salvador.

**Mission and Ministry (Endowment) Committee** – administers the Mission and Ministry Fund and is responsible for the investment of the First Lutheran Los Angeles Fund (FLLAF).

**First Lutheran Los Angeles Fund (FLLAF)** – created from the sale of the former First, Los Angeles property. Disbursement from two-thirds of the income is designated for four purposes: planting and support of new congregations, support of congregations in transition and/or transformation, support of candidates for rostered ministry from this Synod preparing for ministry at one of the ELCA’s seminaries or colleges, and support of existing or new agencies and institutions that are deemed important for the ongoing life and mission of Christ as lived out through the Southwest California Synod.

#### **CLERGY/ROSTERED TITLES**

**The Rev.** – The Reverend (ordained minister)

**Pr.** – Pastor (ordained minister)

**The Rev. Dr.** – The Reverend Doctor (ordained minister who has a doctoral degree)

**MISS** – Minister in Specialized Setting (rostered person who serves in a ministry other than a congregation, such as a hospital or military chaplain.)

**Assistant to the Bishop** – Synod Staff who assist the bishop in carrying out responsibilities (there are 3 Assistants to the Bishop in the Southwest California Synod)

**DEM** – Director for Evangelical Mission who is called by churchwide to serve in the Southwest California Synod.

**AIM** – Associate in Ministry (a rostered lay person who has been theologically trained.)

**DM** – Diaconal Minister (a rostered lay person who is theologically trained and trained in a specialized ministry.)

**DEAC** – Deaconess (a rostered lay person who is theologically trained and has taken a vow as a Deaconess.)

**OLFC**– On Leave From Call (a rostered Ordained, AIM, DM or Deaconess who is currently without a call to a ministry.)

**INTERIM** – A rostered person, usually called to serve a congregation by the Synod Council, who is serving a ministry in between two called persons.

**INTERN** – A seminary student who is on staff of a ministry, in training as part of his/her theological education.

### **RELATED AGENCIES**

**Lutheran Office of Public Policy (LOPP) - California** – Public issues advocacy ministry in CA.

**Mission Investment Fund Investment (MIF)** – Investment fund of the ELCA to financially assist congregations.

**ELCA Foundation** – sustains and grows ministries of the Evangelical Lutheran Church in America. Through its nationwide network of professional gift planning staff, it assists members in their call to live as faithful and generous stewards. It also supports and strengthens the ministry of congregations, agencies, and institutions through financial education, resources, support, and investment management services.

### **RELATED EDUCATIONAL INSTITUTIONS**

**Seminary** – The theological educational institutions that train clergy, Diaconal Ministers, Deaconesses and AImS. There are 9 Lutheran Seminaries in the US.

**PLTS** – Pacific Lutheran Theological Seminary (Berkeley, CA)

**CLU** – California Lutheran University (Thousand Oaks, CA). The one ELCA university in our region. There are 27 ELCA colleges and universities nationwide.

### **OTHER SYNOD MINISTRIES**

**Men In Mission** – Men’s ministry of the ELCA.

**WELCA** – Women of the Evangelical Lutheran Church in America (women’s ministry of the ELCA).

**SWO** – Synodical Women’s Organization (women’s ministry of the synod).

### **SYNOD ASSEMBLY**

**Voting Member** – active participant elected by a congregation to exercise prayerfully his/her judgment concerning matters to come before the assembly for a vote. Such matters include budget, elections, resolutions and memorials.

**Memorial** – a motion made by the synod in assembly requesting action by the Churchwide Assembly on a broad policy issue. Following passage of a memorial by the synod in assembly, the memorial is sent to the Memorials Committee of the ELCA where it is reviewed and recommendations made to the next Churchwide Assembly.

**Resolution** – a request from the Synod Assembly for action that is concrete, specific and within the power of the assembly to implement.

**Reference and Counsel** – the committee that advises the assembly on resolutions and memorials that have been brought to the Synod Assembly. This committee receives resolutions and memorials, and reviews, catalogues, and prepares them for distribution to the assembly for action. Reference and Counsel may offer comments relative to constitutional, administrative or practical considerations.

**Plenary** – session at which all are present.

[This page intentionally left blank]

## **RULES OF PROCEDURE**

### **LEGISLATIVE AUTHORITY**

This synod shall have a Synod Assembly, which shall be its highest legislative authority. (Constitution S7.01)

### **SEAT AND VOICE**

The membership of the Synod Assembly, of which at least 60% of the voting membership shall be composed of laypersons, shall be constituted as follows: (Constitution S7.21)

- A. All ordained ministers under call on the roster of this synod in attendance at the Synod Assembly shall be voting members.
- B. Other persons on the rosters of this synod as defined by ELCA bylaw 10.41.01.b. shall be voting members.
- C. A minimum of two lay members elected by each congregation related to the synod, one of whom shall be male and one of whom shall be female, shall be voting members. The Synod Council shall establish a formula to provide additional lay representation from congregations on the basis of number of members in the congregation. Additional members from each congregation shall be equally divided between male and female except the odd-numbered member, if any, may be either male or female. Each congregation with fewer than 175 baptized members may elect one additional voting member who is a youth (under 18) or young adult (18-30). A congregation with more than 175 baptized members may elect two additional voting members who are youth or young adults, one of whom shall be female and one of whom shall be male. (Constitution S7.21.A10.)
- D. Voting membership shall include the officers of the synod and lay persons serving on the Synod Council who are not serving as voting members from their congregation. (Constitution S7.21 and S7.28)

Retired ordained ministers on the roster of this synod who are serving as interim pastors in a congregation of this synod at the time of the Synod Assembly shall be voting members to the Synod Assembly. (Constitution S7.22.01)

Other retired ordained ministers on the roster of this synod shall be advisory members of the Synod Assembly having voice but not vote. (Constitution S7.22.)

The Secretary of the Synod shall be responsible for the certification of all clergy and lay voting members and shall maintain a record of their attendance at this assembly.

The ELCA representative and any other such official representative(s) of the Church shall have seat and voice in the assembly. Like privilege shall be accorded to non-voting members of the Synod Staff; to the chairpersons of synod Mission Teams, Ethnic Coalitions, and Conferences; the president of the Synodical Women's Organization; the coordinator of Lutheran Men in Mission; and to the chief executive officer (or their appointee) of the officially recognized institutions and agencies of the Synod. (Constitution S7.23.)

### **FLOOR SEATING**

Seating of voting members on the assembly floor shall be in the designated area for voting members. Voting members must be seated at tables in the Voting Member Section of the Assembly meeting room in order to be eligible to vote. All vote counting, whether oral, by hand, standing, ballot, or electronic device will be done at voting member tables only. Voting members at other tables or standing in the aisles or doorways will not be included in any count.

Tables will be provided for advisory and other nonvoting guests. Visitor seating will be in designated areas of the assembly meeting room.

## **BULLETIN OF REPORTS**

All reports published in the Bulletin of Reports shall be received by the assembly without vote.

## **SPEECHES**

Each person, when recognized by the chair, shall state his/her name and congregation or institution represented before beginning to speak. No person shall speak more than **three minutes** nor more than **twice** on the same subject, unless the voting members, by a majority vote, waive the provisions of this rule; provided, however, that this rule shall not apply to messages and reports by agencies and officers of the synod, or to guest speakers to whom special time has been allotted.

## **APPROPRIATION OF FUNDS**

Any proposal to appropriate funds, whether by amendment to the budget or otherwise, which is presented to a meeting of the Synod Assembly without the prior approval of the Synod Council shall be referred to the Executive Committee for a report and recommendation prior to action by the Synod Assembly and shall require a two-thirds majority vote by the assembly for adoption. (Constitution S10.04)

## **MOTIONS AND RESOLUTIONS**

Any voting member may make a motion from the floor, which is germane to any pending question. Motions and resolutions of a general character that are not germane to a pending question must be processed through the Committee on Reference and Counsel in the following manner:

Resolutions or motions prescribing action, from any institution, agency, synod mission team, coalition, congregation, or individual, must bear the signatures of at least five people who are members of the Southwest California Synod. The resolutions shall be given in writing to the Committee on Reference and Counsel by 60 days prior to the start of the Assembly.

All other resolutions or motions that are not received by the Committee on Reference and Counsel 60 days prior to the start of the Assembly shall be placed on the assembly agenda as new business only and would require a two-thirds vote of voting members requesting the resolution be put before the assembly before it may be considered.

Resolutions not considered by the Synod Assembly will be referred to the Synod Council for consideration.

## **DISPLAYS AND EXHIBITS**

Authorization for setting up displays and exhibits, and for placing posters, announcements, etc., at Assemblies of the Southwest California Synod shall be limited to those agencies or groups who are organically within the structure of the Synod or the ELCA, or are direct beneficiaries of the synodical or Churchwide budget. The selling of goods or services is allowed only by approval of the Synod Council.

## **DISTRIBUTION OF MATERIALS**

All materials for distribution to voting members at the Synod Assembly shall be delivered to the Synod Office by May 1. The synod secretary is responsible for distribution of all materials. After the assembly is in session, permission to distribute materials must be secured from the Committee on Reference and Counsel.

## **ROBERT'S RULES OF ORDER**

Robert's Rules of Order, latest edition, shall govern parliamentary procedure of the Synod Assembly, except in cases where it conflicts with these or other special rules of procedure, in which case the adopted rules of procedure shall prevail. (Constitution S7.32)

# Parliamentary Motions Guide

Based on *Robert's Rules of Order Newly Revised (10<sup>th</sup> Edition)*

The motions below are listed in order of precedence. Any motion can be introduced if it is higher on the chart than the pending motion.

<b>YOU WANT TO:</b>	<b>YOU SAY:</b>	<b>INTERRUPT?</b>	<b>2<sup>ND</sup>?</b>	<b>DEBATE?</b>	<b>AMEND?</b>	<b>VOTE?</b>
§21 Close meeting	I move to <b>adjourn</b>	No	Yes	No	No	Majority
§20 Take break	I move to <b>recess</b> for	No	Yes	No	Yes	Majority
§19 Register complaint	I rise to a <b>question of privilege</b>	Yes	No	No	No	None
§18 Make follow agenda	I call for the <b>orders of the day</b>	Yes	No	No	No	None
§17 Lay aside temporarily	I move to <b>lay the question on the table</b>	No	Yes	No	No	Majority
§16 Close debate	I move the <b>previous question</b>	No	Yes	No	No	2/3
§15 Limit or extend debate	I move that debate be limited to ...	No	Yes	No	Yes	2/3
§14 Postpone to a certain time	I move to postpone the motion to ...	No	Yes	Yes	Yes	Majority
§13 Refer to committee	I move to refer the motion to ...	No	Yes	Yes	Yes	Majority
§12 Modify wording of motion	I move to <b>amend</b> the motion by ...	No	Yes	Yes	Yes	Majority
§11 Kill main motion	I move that the motion be <b>postponed indefinitely</b>	No	Yes	Yes	No	Majority
§10 Bring business before assembly (a main motion)	I move that [or "to"] ...	No	Yes	Yes	Yes	Majority



# Parliamentary Motions Guide

Based on *Robert's Rules of Order Newly Revised (10<sup>th</sup> Edition)*

**Incidental Motions** - no order of precedence. Arise incidentally and decided immediately.

<b>YOU WANT TO:</b>	<b>YOU SAY:</b>	<b>INTERRUPT?</b>	<b>2<sup>ND</sup>?</b>	<b>DEBATE?</b>	<b>AMEND?</b>	<b>VOTE?</b>
§23 Enforce rules	Point of order	Yes	No	No	No	None
§24 Submit matter to assembly	I appeal from the decision of the chair	Yes	Yes	Varies	No	Majority
§25 Suspend rules	I move to suspend the rules which ...	No	Yes	No	No	2/3
§26 Avoid main motion altogether	I object to the consideration of the question	Yes	No	No	No	2/3
§27 Divide motion	I move to divide the question	No	Yes	No	Yes	Majority
§29 Demand rising vote	I call for a division	Yes	No	No	No	None
§33 Parliamentary law question	Parliamentary inquiry	Yes (if urgent)	No	No	No	None
§33 Request for information	Point of information	Yes (if urgent)	No	No	No	None

**Motions That Bring a Question Again Before the Assembly** - no order of precedence. Introduce only when nothing else pending.

§34 Take matter from table	I move to take from the table ...	No	Yes	No	No	Majority
§35 Cancel or change previous action	I move to rescind/ amend something previously adopted...	No	Yes	Yes	Yes	2/3 or maj. w/ notice
§37 Reconsider motion	I move to reconsider the vote ...	No	Yes	Varies	No	Majority

# ROSTER CHANGES SINCE LAST ASSEMBLY

## 2017-2018

Synod Assembly 2018 Final

### ORDINATIONS

Rev. Henry Martinez	Southwest California Synod, Glendale	10/11/2017
Rev. Marsha Harris	Central, Van Nuys	12/16/2017

### LETTERS OF CALL

Rev. Elizabeth Nees	Holy Trinity, Thousand Oaks	Associate Pastor	05/21/2017
Rev. Henry Martinez	Global Mission Unit, Australia	Country Coordinator	06/15/2017
Rev. Steve Jerbi	Bethel, Encino	Pastor	08/20/2017
Rev. James Phillips	Holy Trinity, Inglewood	Pastor	08/20/2017
Rev. Marsha Harris	Central, Van Nuys	Pastor-First Call	10/15/2017
Rev. Ryan Chaddick	American, Burbank	Pastor	10/22/2017
Rev. Julie E. McCain	Ascension, Thousand Oaks	Associate Pastor of Children, Youth, and Family Ministries	01/28/2018
Rev. Nicole Fielder	Shepherd of the Valley, Simi Valley	Pastor of Children, Youth, & Family Ministries	03/04/2018

### CHURCHWIDE AND SYNODICAL LETTERS OF CALL

Rev. Henry Martinez	Global Mission Unit, Australia	YAGM Coordinator	06/15/2017
Rev. Asher O'Callaghan	Extraordinary Lutheran Ministries	Program Director	11/06/2017
Rev. Lorie B. Tatum	First, Carson	Interim Pastor	02/17/2018

### TRANSFERS INTO SYNOD

Deacon Megan Hogstad	OLFC	Northwest Washington Synod	05/16/2017
Rev. John Santoro	Retired	Indiana-Kentucky Synod	05/30/2017
Rev. Kirsi Stjerna	Called	Grand Canyon Synod	07/10/2017
Rev. Steven Jerbi	Called	Greater Milwaukee Synod	08/20/2017
Rev. James Phillips	Called	Metropolitan Washington D.C. Synod	10/01/2017
Rev. Joshua McGuffie	Study Leave	Upstate New York Synod	01/08/2018
Rev. Amie Odahl	OLFC	Saint Paul Area Synod	01/09/2018
Rev. Lorre B. Tatum	Called	Caribbean Synod	02/19/2018
Rev. Julie McCain	Called	Southwest Minnesota Synod	01/28/2018

### TRANSFERS OUT OF SYNOD

Rev. Ronald Geikow	Retired	Pacifica Synod	08/25/2017
Rev. Sarah Sumner-Eisenbraun	Called	Pacifica Synod	09/01/2017
Deacon Kevin Sumner-Eisenbraun	Called	Pacifica Synod	12/02/2017
Rev. Luther Martell	Called	Upper Susquehanna Synod	01/15/2018
Rev. James Bullock	Retired	Pacifica Synod	3/07/2018

**ROSTER CHANGES SINCE LAST ASSEMBLY  
2017-2018**

Synod Assembly 2018 Final

**ON LEAVE FROM CALL**

Rev. Gary Heltsley		07/01/2017
Rev. Rustin Comer		07/15/2017
Rev. Scott Fielder		08/20/2017
Rev. Reggie Hansome, Jr.		10/08/2017
Rev. Lynn Enloe		11/30/2017
Rev. Stephen Fiechter		01/01/2018
Rev. Patricia Lowe		01/01/2018
Rev. Dan Gibson	Study Leave	01/01/2018
Rev. Amie Odahl	Family Leave	02/17/2018

**EXTENDED LEAVE FROM CALL**

Deacon Shannon Savage-Howie	Family Leave	09/09/2017
-----------------------------	--------------	------------

**RETIRED**

Rev. James Lobdell		10/01/2015
AIM Geraldine Wilkowski		08/01/2016
Rev. David Berkedal		09/01/2017
Rev. Ray Kibler III		10/01/2017
Rev. John Soyster		12/01/2017
Rev. Bryan Woken		01/01/2018

**DEATHS**

Rev. Joseph Wong		10/24/2017
Rev. Alvin Stewart Rudsill		02/27/2018
Rev. Arthur Louis Henry		03/21/2018
Rev. Phillip Luther Natwick		03/23/2018



**ELCA Churchwide  
Representative**

**Prairie Rose  
Seminole**

Prairie Rose Seminole is an enrolled tribal member of the Three Affiliated Tribes of North Dakota, descendent of the Sahnish/Arikara, Northern Cheyenne and Lakota Nations, and of German Russian heritage. In 2013 she was named Arikara Woman of the year by the Sahnish Community of White Shield North Dakota. In 2014 the Bush Foundation recognized Seminole as a Native Nations Rebuilder, a program that recognizes individuals who have a passion for learning about innovative tribal governance practices, and how they can take these ideas and approaches to their own Native nations to make a positive difference. In 2015 the ND Center for Business and Technology recognized Seminole as one of 2015 Leading Ladies.

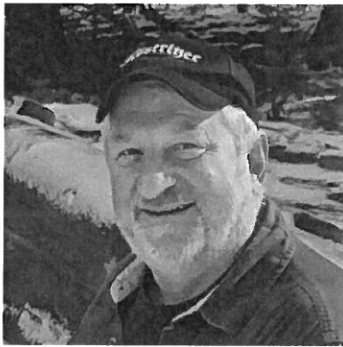
Currently Seminole is the Program Director for the American Indian, Alaska Native Ministries, serving over thirty American Indian Alaska Native ministries and 65 synods within the Evangelical Lutheran Church in America.

---

## *2018 Rostered Leader Anniversaries*

---

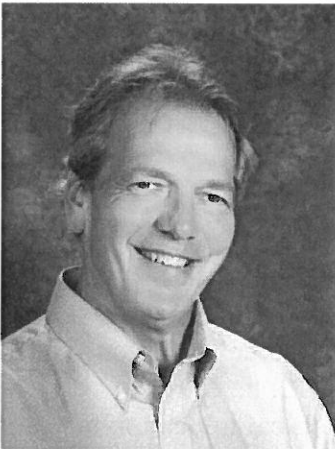
### **25 Years of Ordination**



**The Rev. Kenneth Gesch**  
**Ordained at Christ, Goleta**  
**January 3, 1993**

Pastor Gesch earned his BA in History at the University of Maryland, College Park in 1985 and his M.Div at Trinity Lutheran in Columbus, OH in 1990. From 1978 to 1986 he served in the US Army, earning the Army Achievement Metal for contributions to the development of a ministry effectiveness program for the army chaplaincy.

He was called to Trinity, Ventura in 1993, and served as an Army Chaplain from 1996 to his retirement from the army in 2012.



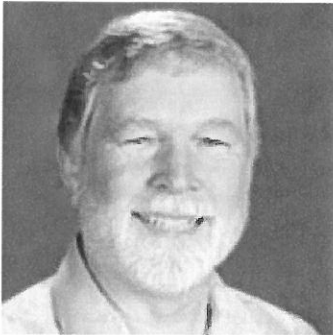
**The Rev. Marty Hancer**  
**Ordained at Mount Olivet, Minneapolis MN**  
**June 13, 1993**

Pastor Marty Hancer has served as Senior Pastor at Emmanuel Lutheran, North Hollywood since September 2016. Born and raised in Minneapolis, MN, Pastor Marty did his undergraduate work at the University of Minnesota and completed his Master of Divinity degree at Luther Northwestern Theological Seminary, St. Paul, MN. Pastor Marty interned at Cross and Crown Lutheran Church in Rancho Cucamonga, CA and has previously served as Associate Pastor of First Lutheran Church, Brainerd, MN,

and as Senior Pastor at Trinity Lutheran, Princeton, MN.

Reflecting on his ministry, Marty says: "I love being a pastor! I get to share with ALL people the good and joyful news that God loves them more than they can possibly imagine. I get to share the good news that God forgives, God accepts and God in Christ is with them in all times and circumstances. No exceptions. And I get to encourage people in their own calling and sense of purpose... in knowing that their story is

## 40 Years of Ordination



**The Rev. Kenneth Simon**  
**Ordained at Faith, Phoenix AZ**  
**June 25, 1978**

Pastor Simon received his BS in Personnel Management of Business at Arizona State University, Tempe in 1974 and his M.Div from Pacific Lutheran Theological Seminary in 1978. After his ordination and service as an Associate Pastor in Arizona, he served at St. Stephen's of the Valley, Palmdale for 20 years where he used his gift of music to institute a contemporary service and to utilize keyboards in worship. Pastor Ken then served at First Lutheran, Glendale until his retirement in May of 2016.

He and his wife, Cathy Beaumont, have two children, Berkeley and Kay.



**The Rev. Lynn Bruer**  
**Ordained at First, Albert Lea MN**  
**August 13, 1978**

Pastor Lynn Bruer received her BA Cum Laude in English and Religion in 1972 from Concordia College in Moorhead, Minnesota and her M.Div in 1978 from The Lutheran School of Theology in Chicago. She completed her Clinical Pastoral Education at Children's Memorial in Chicago and the Mental Health Institute in Independence, Iowa. She also earned her MA in Applied Spiritual Theology at Mt. St. Mary's College in Los Angeles in 1994.

After her first call in Illinois, she served at Trinity, Manhattan Beach from 1988 through 2005. She served at Grace, Santa Barbara through her retirement in 2015, assisting that congregation to continue its legacy of service to the community in gifting its land to California Lutheran Homes to develop affordable senior housing and provide ongoing support for low-income families and individuals. She also served as Chaplain at Santa Monica Hospital and St. Mary's Hospital Medical Center in Long Beach. She lives in Portland, Oregon enjoying gardening, abstract painting, hanging out with her kids and her siblings, the library and its books.



**The Rev. Ronald C. Bennett**  
**Ordained in the Augustana Lutheran Church,**  
**Lake Chatauqua, NY**  
**June 22, 1958**

Pastor Bennett earned his BA at Augustana College in Rock Island, Illinois in 1954, the same year he married Priscilla, his wife of 59 years. He attended Augustana Seminary, and served in Texas before being called to Church of the Master, Lancaster; Messiah (now Emmanuel), Bakersfield; Holy Cross in Pacifica Synod;

and Peace, Lompoc.

After his retirement in 1994, he served as an interim pastor in a number of churches and cities, including three ministries in New Zealand. He has led worship services atop Mt. Whitney, led communion outside the Garden Tomb in Israel, and spoken from Luther's pulpit in Wittenberg.

Pastor Bennett also served as a Council Commissioner and Chaplain of the Boy Scouts, and a Resident Minister of the Church of the Sequoia. With Priscilla, who passed away in 2013, he had five children, 13 grandchildren, and six great-grandchildren, and lived in or visited all 50 of the United States as well as Egypt, Israel, Jordan, and many European countries. In 2014, Pastor Ronald married Jean, who had been a member of Pastor and Priscilla Bennett's Parkinson's support group.



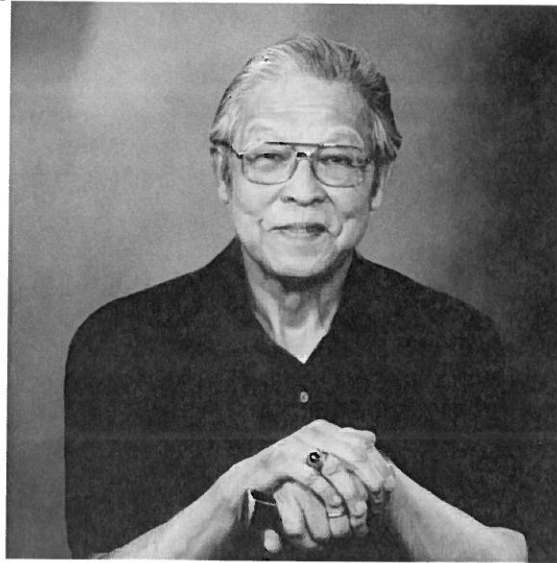
**The Rev. Ronald Kragthorpe**  
**Ordained in the Northwest Synod of the United Lutheran**  
**Church in America**  
**May 16, 1958**

Pastor Kragthorpe graduated from Northwest Theological Seminary in Minneapolis in 1958 and served a year with the Board of American Missions in the United Lutheran Church of America. He served in Spokane, Washington and Liberia before his tenure as a campus pastor at UC David on behalf of National Lutheran Campus Ministry.

In 1972 he was called to California Lutheran University, where he served as Vice President of Student Affairs until his retirement in 1993.

Pastor Kragthorpe has also served on the board of Lutheran Social Services and on the Social Ministry Committee of Holy Trinity, Thousand Oaks. He and his wife, Ila Jean, are the parents of three children.

# In Memoriam



**The Rev. Joseph Wong**

*January 15, 1927 – October 24, 2017*

The Rev. Joseph Wong was born in Philadelphia, Pennsylvania. During the Great Depression, his father sent the family to live in Canton, China from 1932 - 1938. The family fled to Hong Kong after the Japanese Army occupied Canton, three years before the start of World War II. Joseph was deeply affected by the cruelty of war and the human suffering. A turning point occurred in his life when he was invited to attend a church service. He was so touched and moved by the message of God's love that he converted to the Christian faith. Joseph believed surviving the war and its hardships and personally experiencing God's grace paved the way for his entry into ministry.

After the war, Joseph and his family returned to the U.S. to Wilmington, Delaware where he attended The King's College and the University of Delaware. He enlisted in the Air Force, was

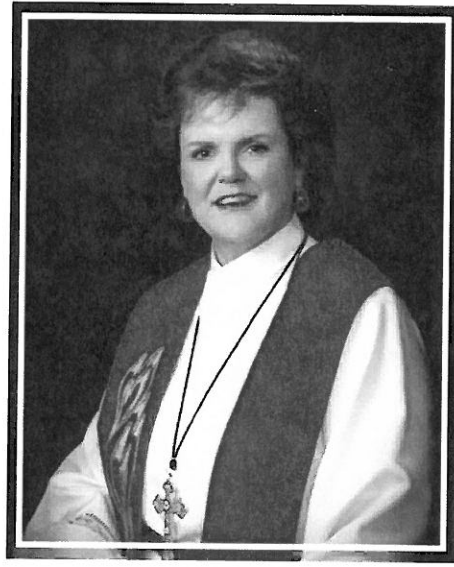


stationed in Texas and honorably discharged in 1952. He met Ruth Quanin in 1956 at a Christian retreat on a Mennonite farm, and they were married in 1957.

His increasing interest in theology led him to attend Concordia Theological Seminary in Springfield, Illinois, completing his theological training in Seattle, Washington. Pastor Joseph served in Oklahoma, Minnesota and Wisconsin.

In 1973, a call was extended to him by the American Lutheran Church to become the first missionary-at-large and to serve the community in Los Angeles' Chinatown. He was committed to doing the Lord's work by dedicating his time and energy to projects like Chinatown Service Center, Chinatown Teen Post, Southern California's Chinese Historical Society, Chinatown's senior housing and library, just to name a few. He reached out to the youth in Chinatown's gangs, helping them to obtain jobs and return to school. His own desire to continue learning and gain knowledge motivated him to attend the California Graduate School of Theology where he earned his Ph.D in Theology in 1977. He was later appointed Director of Asian Ministries to help establish and grow churches in the Asian communities throughout Los Angeles.

Pastor Wong retired in 1992 but continued to serve God and assisted others, by never refusing to help wherever he was needed. He is survived by his wife of 60 years, Ruth, and his three children, Timothy (Terri), Titus and Tamara (Mitchell) and his grandchildren, Tyler, Trevor, Taryn, and Aaron.



**The Rev. Mary Todd-Pendergast**

*April 16, 1943 – January 18, 2018*

The Rev. Mary Todd-Pendergast was born in Chicago, Illinois. She earned her Associates in Arts and Sciences at El Camino College, and her Bachelor of Arts in Philosophy and Religious Studies at Cal State Dominguez Hills, and worked as an Operating Room Nurse in Milwaukee County and the Torrance Memorial Medical Center before attending Fuller Seminary in Pasadena, receiving her Masters in Divinity from Pacific Lutheran Theological Seminary in Berkeley.

Pastor Mary served as an Interim at St. Luke's, Long Beach in 1992, and was subsequently called as Pastor from 1993 to 2000. She was called to Holy Redeemer, Bellflower from 2009 to 2012, and then served as an Interim Pastor at several Southern California churches. After moving to Arizona, she worked as a Chaplain with the Arizona Department of Public Safety and the Arizona Foster Care system. She is survived by her husband, Tom; children Sean and Kathleen; grandchildren Chelsea and Anthony; great-grandchildren Isabella and Hagen; and her brothers Charles and John.



**The Rev. Alvin S. Rudisill**

*January 10, 1929 - February 21, 2018*

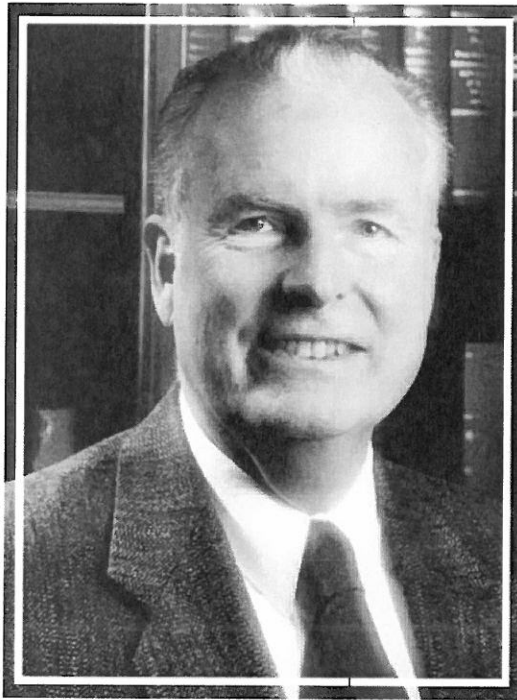
Born in New Jersey, Rev. Alvin S. Rudisill graduated from Gettysburg College and held master's degrees from the Lutheran Theological Seminary at Philadelphia and the University of Pennsylvania. He was a Fulbright Scholar at Heidelberg University in Germany and completed his doctor of philosophy at Drew University in New Jersey. He also held an honorary doctor of humane letters from the Hebrew Union College-Jewish Institute of Religion in Los Angeles.

Pastor Rudisill served as a longtime chaplain at the University of Southern California, starting as a campus pastor in 1962 before being named university chaplain in 1969. He was a counselor to four USC presidents, and his role overseeing community outreach and programs in the 1980s and 1990s reshaped USC's relationship with its surrounding community. He also served as associate professor of religion and medicine and senior fellow with USC's Center for Multiethnic and Transnational Studies. He was a mainstay on campus until his retirement in 2011.

He also helped oversee efforts to collaborate with local schools, including USC's Joint Educational Project; USC's Neighborhood Academic Initiative, a seven-year enrichment program designed to prepare underprivileged students from South and East Los Angeles for admission to college; and other partnerships designed to further strengthen the community. Other major endeavors included programs intended to encourage economic development and efforts to help the university's neighbors recover and rebuild following the 1992 Los Angeles unrest.

He was the former grand president of Phi Sigma Kappa and member of Vesper Society and Rotary Club of Los Angeles.

Pastor Rudisill was married to Shirley Erickson and later to Nancy Jane Western from 1977 until she passed away in 2001. He is survived by his companion, Janice Hsia; his daughter, Suzanne; his son, Alan; five grandchildren; one great-granddaughter; five stepchildren; and two step-grandchildren.



**The Rev. Arthur Louis Henry**

*February 11, 1938 - March 21, 2018*

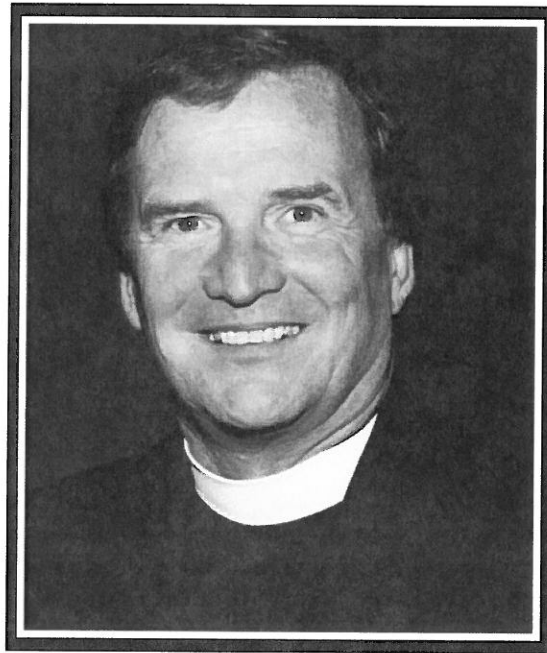
Arthur Louis Henry was born February 11, 1938 in Cambridge, Massachusetts. He attended grade school in La Canada, and graduated John Muir High School in Pasadena, California. He graduated from Augustana College in Rock Island, Illinois, in 1959 and completed Seminary at Rock Island's Lutheran School of Theology in 1963. He completed a Masters in Sacred Theology at Yale in 1964, and was ordained at his home church, Angelica, Los Angeles that same year.

His first call was to be the organizing pastor of the Church of the Incarnation in Davis, California, where he met Sylvia, a junior at U.C. Davis, whom he married on June 26, 1966. Pastor Henry returned to school to get his Doctorate in Theology at the Graduate Theological Union in Berkeley, California, continuing to work on his dissertation of Martin Luther's Early Development while a Fulbright Scholar in Salzburg, Austria.

In 1972, Pastor Henry accepted a call to Village Lutheran Church of Westwood, where he served for 26 years. During those years, he was a member of the board of directors at Lutheran Hospital Society, Claremont School of Theology, and the Philanthropic Society of Los Angeles. He served for 40 years as Chaplain for the Chief Special Agents and the Peace Officers Association of Los Angeles County. Following his time at Village Lutheran Church, he worked as interim pastor of First Lutheran Church in Koreatown, worked with Hospice organizations in Los Angeles, and was chaplain for the Harbor Police in San Pedro, California.

His lifetime love of singing began with the Pasadena Boy Choir at the young age of nine. He sang with the Augustana Choir in college, Gregorian Chant in Los Angeles, liturgy in his church services, and sang to his children and grandchildren. He was a lifetime scholar, with particular interest in the Renaissance and Reformation periods.

Arthur and Sylvia celebrated 50 years of marriage in 2106 and raised three daughters: Dorinda Lynn Bosetti, Marian Irene Henry, and Rebecca Louise DiMundo. He is survived by his seven grandchildren.



**The Rev. Philip Luther Natwick**

*July 27, 1930 - March 23, 2018*

Pastor Philip Natwick's ministry included pastorates spanning more than 50 years in South Dakota, Wisconsin, California, and Oregon. He was a skilled preacher who had the gift of conveying the Word of God in a meaningful and practical way, and encouraged and supported the inclusion of music as an important part of worship.

His call to service included terms on numerous boards including the Wheat Ridge Foundation and the Boards of Regents at both Pacific Lutheran University and Pacific Lutheran Theological Seminary, Berkeley. He was also a member of the National Church Council of the Evangelical Lutheran Church of America, as well as many local boards and committees. He is survived by his college sweetheart, Dolores, with whom he shared almost 64 years, not only as partners in service but also as best friends. He is also survived by his five children: Michael, Anne, Mary, Stephen, and Katherine, and nine grandchildren.