

## Ten Things to Know about 1517 Media Spring 2020

1. This year we'll release the third set of materials based on Daniel Erlander's timeless work. An updated version of his classic *Baptized, We Live: Lutheranism as a Way of Life* will be accompanied by a new, comprehensive *Baptized, We Live Leader Sourcebook*. The new resources complement two sacramental resource series released recently, *A Place for You* (Holy Communion) and *Come to the Water* (Holy Baptism). [augsburgfortress.org/bwl](https://augsburgfortress.org/bwl)
2. Also inspired by the work of Daniel Erlander is the Lutheran Welcome series of highly visual and engaging booklets about the Lutheran expression of faith. Place them in a narthex or welcome area display rack, or keep them handy for whenever someone may have questions about the Lutheran basics. [augsburgfortress.org/lutheran-welcome](https://augsburgfortress.org/lutheran-welcome)
3. Recent additions to the **Worship Matters** series include *Embodying Confidence and Grace: A Handbook for Presiding Ministers* and *Sing with All the People of God: A Handbook for Church Musicians*. These volumes join several existing books that help leaders and laity develop a richer understanding and practice of worship. [augsburgfortress.org/worshipmatters](https://augsburgfortress.org/worshipmatters)
4. Fall 2020 will see the release of a new liturgy and song supplement to Evangelical Lutheran Worship, titled *All Creation Sings*. Three new liturgies, a complement of selected new prayers, and approximately 200 hymns and songs will supply a rich new collection prepared to enliven your congregation's worship in these rapidly changing times. [augsburgfortress.org/all-creation-sings](https://augsburgfortress.org/all-creation-sings)
5. Fortress Press and Luther Seminary have partnered to launch a new series of books to bring new life to the preaching task. 2020 releases in this series include *Leading with the Sermon* by William H. Willimon and *A Lay Preacher's Guide* by Karoline Lewis. [augsburgfortress.org/working-preacher](https://augsburgfortress.org/working-preacher)
6. **Broadleaf Books** is the newest imprint in our book publishing program. Titles published by Broadleaf Books will explore the expanse of human experience—seeking to deepen faith and understanding and bring wholeness to readers and society. Look for nonfiction books in the areas of religion and culture, personal growth, spirituality, social justice, and Christian living. [broadleafbooks.com](https://broadleafbooks.com)
7. Sparkhouse Digital is in its second year of providing access to a wide range of resources for a low annual subscription fee. One example in Sparkhouse Digital Youth is *Wholeness and Holiness*, guiding students to embrace the wide-ranging wholeness and holiness of people and communities. [augsburgfortress.org/sparkhouse-digital](https://augsburgfortress.org/sparkhouse-digital)
8. Newly available are two guidebooks for congregations' summer ministry, *Journey Together: Twelve Intergenerational Summer Events* and *Creative Arts Camp: Four Summer VBS Programs*. Also available on Sparkhouse Digital Children. [augsburgfortress.org/sparkhouse-summer](https://augsburgfortress.org/sparkhouse-summer)
9. The latest release in the video-based series *Dialogues On* addresses one of the most critical topics in church and society today: *Dialogues On: Race*. Other titles in this series are *Dialogues On: The Refugee Crisis* and *Dialogues On: Sexuality*. [augsburgfortress.org/dialogues-on](https://augsburgfortress.org/dialogues-on)
10. Beaming Books continues its mission to publish high-quality children's books that help kids thrive in every part of who they are—emotionally, socially, and spiritually. New releases for 2020 include *The Memory Book: A Grief Journal for Children and Families* and *Let's Eat!: Mealtime around the World*. [beamingbooks.com](https://beamingbooks.com)

# California Lutheran

---

## UNIVERSITY

With joy I share with you about the work of California Lutheran University who as member of the Network of Colleges and Universities of the ELCA equips graduates who are called and empowered to serve the neighbor so that all may flourish.

4,303 Cal Lutheran students learn at 5 different centers in California. We offer 20 undergraduate majors and 29 graduate programs of study. 53% of our undergraduate students are from underrepresented populations and one third are the first in their family to attend college. Our students come from 42 states, 49 countries, and represent a diversity of faiths and cultures. With a network of 30,000 alumni, students from our founding in 1959 until now have discovered their purpose and are transforming their community and the world.

Exciting ventures are on this way this summer.

A dedicated space in the Student Union for a **Black Student Union/Sister's Circle headquarters** is being built for students to raise awareness of and share the richness of black history, African culture, and current issues affecting the black community.

On July 25-29, Cal Lutheran will welcome high school students and adults from Regions One, Two, Three and Four at the [Western States Youth Gathering](#). As the journey of faith comes with the challenge of the unknown, students will FOCUS on grace, fear, love and Jesus. "SHIFT", a one-day leadership event for youth from racially diverse congregations will be held on July 24 in advance of the gathering.

Two sessions of "[Executive Skills for Church Leaders: Learning from the world of the MBA](#)" are offered yearly so that church leaders from outdoor and social ministry settings, congregations, and clergy can apply concepts from management to the complex arena of ministry today. The next sessions are July 13-17 at Cal Lutheran (scholarships available) and January 11-15, 2021, at Spirit in the Desert Retreat Center, Arizona.

Opening this summer, the new [Swenson Science Center](#), a three-story, 47,000-square-foot facility will more than double the amount of space dedicated to science featuring 12 labs for teaching biomechanics, organic synthesis, physiology and neuroscience, marine biology, cell and developmental genetics, exercise physiology ergometry, and nuclear magnetic resonance and 8 labs designated for faculty and student research.

The [Thriving Leadership Formation](#) program brings ELCA leaders together to cultivate skills and networks of trust, support, spiritual practice and accountability. Fueled with \$1million grant from Lilly Endowment Inc., this project helps pastors and church leaders throughout 14 Western States avoid burnout and thrive in their ministries.

The university has opened the new [School for Professional and Continuing Studies](#) which include the Bachelor's Degree for Professionals program, the Center for Nonprofit Leadership, and a new Center for Lifelong Learning. A Fifty and Better program for older adults has been launched to serve older adults who want to take non-credit classes for the joy of learning and social engagement.

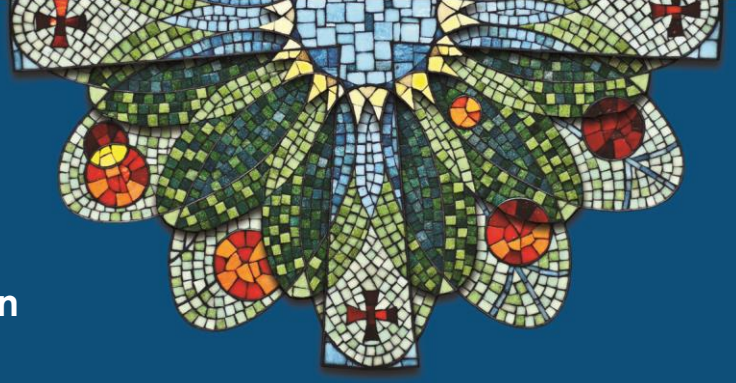
Cal Lutheran is one of eight universities partnering with the state of California on a first-in-the-nation program to help students pay for college through public service, targeting pressing challenges in our region. The students selected as **AmeriCorps Fellows** will dedicate 25 hours a week for 22 weeks to serve as mentors and advisors for low-income and immigrant youth throughout Ventura County.

Launching in fall 2020, an **ethnic and race studies major** will help students build cultural competence and gain deeper understanding of communities of color in the U.S. Student's confidence in their own identities will be strengthened by validating the historical, artistic, and economic contributions of the groups with which they identify.

You can learn about all these things and more by visiting us online at [www.callutheran.edu](http://www.callutheran.edu). We are your Lutheran university in the west serving the church and world.



**ELCA Foundation**  
Evangelical Lutheran Church in America  
God's work. Our hands.



## Updates from the ELCA Foundation

Synod Assemblies 2020

### About the ELCA Foundation

As our faith matures and deepens, so does the way we support God's work in the world. The ELCA Foundation exists to sustain and grow our ministries by stewarding assets for all the related organizations of the ELCA.

Through our national network of 23 gift planners, the ELCA Foundation supports members of the ELCA in their call to live as faithful and generous people. Our gift planners work with congregational members to create life giving plans that ensure successful and lasting legacies are passed on to loved ones and treasured ministries. The Foundation also supports and strengthens ELCA congregations, synods and related entities with gift planning resources and investment management services.

Regional Gift Planners are available to help:

- Work with congregational leaders to identify important considerations, and execute an appropriate plan, to cultivate current and planned gifts
- Develop congregational gift acceptance policies to receive gifts well
- Meet with individual members to develop charitable gift giving plans
- Establish an investment account for endowments and other investable assets utilizing the Endowment Fund Pooled Trust (Fund A)

In 2019, the ELCA Foundation network generated over \$124.1 million in total gifts and investment assets. Of that, \$91.3 million are future planned gift commitments with over \$12m in future planned gifts directly benefitting individual ELCA Congregations. There were \$6.9 million in current gifts, including funded trusts, gift annuities and individual endowments, and \$25.9 million new assets invested in Fund A. Thank you for the opportunity to work in your synod and trusting your endowment dollars to the ELCA Foundation.

### In the Southwest California and Pacifica Synods:

- \$22.4m invested in the Pooled Endowment Trust, Fund A.
- \$12.4m in new planned gifts since 2018.

### Contact your regional gift planner:

Lisa Higginbotham  
805-910-5048  
lisa.higginbotham@elca.org

*"Lisa meets one-on-one with parishioners to help them make the best choices with their estate. No church is too small to benefit greatly from this service! We are forever strengthened by Lisa's knowledge and expertise."*

Christ Lutheran Church  
San Clemente, CA



Joy and Peace to you from God our Father and Lord and Savior Jesus Christ!

I have the privilege of bringing greetings on behalf of the 150+ employees, volunteers and clients of Lutheran Social Services of Southern California. I want to begin by telling you how thrilled I am to be a part of such a wonderful organization. I am so excited about the chance to work alongside each of you in ministry and look forward to meeting you in person, once guidelines allow.

As I travel throughout our network of over 75 programs in six different counties, I've had the honor to meet the most passionate men and women of God who serve on our front lines. Their love and care for the clients we support and services we provide, inspire our mission to live out God's love by embracing, equipping and empowering vulnerable people in Southern California.

We are committed to ensuring that LSS Southern California is both a transparent and transformative organization, dedicated to living our mission, vision and values. To that end, we have brought on new team members who are equally passionate about our work and the people we serve. They are results driven leaders that, like me, will hold our organization accountable and always act in love.

My life's scripture has always been Jeremiah 29:11, which says: *I know the plans I have for you, says God. Plans to prosper you and not harm you. Plans to give you hope and a future.*

As we enter the new fiscal year, I invite you to join our team in finding a scripture that resonates with you. One in which you hear and feel the very presence of God. When everything is well, thank God through that scripture. When life's challenges arise, cling to that scripture and never, ever forget that God is a person of His Word. He will always deliver on His promises.

We are blessed by your prayers, collaboration and financial support, and pledge to do everything possible to bring the Hope of Jesus Christ to those women, men and children facing a crisis in this season and the next. We are thankful that you see yourselves as servant leaders in Christ and purveyors of His Gospel through our work.

Below you will find our most recent COVID related updates from our offices within the Pacifica Synod. I hope to join you in person at the next Synod gathering but, look forward to virtually meeting as many of you as possible until that time. *Now may the grace of God, the love of Jesus, and the sweet communion of the Holy Spirit, rest, rule, and abide now, henceforth and forevermore. Amen.*

*LaSharnda Beckwith*

LaSharnda Beckwith, PhD.  
President and Chief Executive Officer

✓ Ministry Highlights:

- **CCLM** Construction of a new roof at the shelter is ready to begin, as is the replacement of a sprinkler system. We are waiting for permits from the city of San Bernardino. In addition, the residential house that burned has been totally renovated and clients have moved back into the structure. The external painting of the residential houses is the only significant work that is outstanding. Due to the COVID-19 pandemic, the number of shelter clients was reduced for social distancing, but case management continues. Many of our community programs have been suspended but others, like our after-school sessions, are being offered digitally.
- **Orange County** has reduced the number of days our Garden Grove office is open, along with fewer numbers of hours per day. However, clients are still being case managed and assisted in other ways. This location deals with two groups of people. First, women who have been victims of crime and/or domestic abuse. Our **Victims Intervention Program (VIP)** offers both tangible and intangible supportive services, ranging from therapy to emergency housing to remove the client from an abusive partner. Second, we deal with those who are homeless and require immediate intervention. Funds from the Matthew 25 Grant program have been a godsend both to the Garden Grove office and the women, men and children who come there for hope.
- **Riverside County** Our Riverside County office is experiencing a significant surge from those in need of emergency services and rental assistance. The most vulnerable population consists of first-time clients that were secure in their homes prior to the COVID-19 pandemic. Calls are up by more than 120%, with many of our referrals coming from the resource line 2-1-1, churches, county and city agencies. Our emergency rental assistance program has assisted 28 families with housing and another 14 are waiting for paperwork to be processed. Most have either no source or significantly reduced income. Because most of these individuals are uncertain about their future employment, the challenge has been goal planning with them. Our goal is to continue to walk alongside them while they rebuild their resources and determine next steps.
- **Rural San Bernardino County** Our Behavioral Health providers have transitioned 98% of their therapeutic clients to remote and telehealth services. In Trona, a growing need for client confidentiality and safe expression has prompted the reopening of our physical office to allow much needed counseling sessions without the distraction or interruption of household residents.
- **San Diego County** has seen a significant surge in clients at our Project Hand food pantry in Chula Vista, nearly tripling previous monthly averages. In-kind donations of non-perishable food and gift cards are always welcome. The LSS Upward Bound/TRIO team has pivoted to remote services, in order to keep those students, already impacted by racial disparities, from falling further behind because of technological disproportions. The Kathy Hopper Senior Friendship Center in Clairemont Mesa is closed because of the pandemic, and the Senior Companion is making wellness contacts by telephone.

We are grateful to the Synod and all the congregations for your prayers and your many levels of support. At this time, when many services for the poor and disenfranchised are being reduced, your faithful commitment to our agency allows us to continue reaching those in greatest need. Thank you, and God bless you.





## Mission Investment Fund

### Evangelical Lutheran Church in America

God's work. Our hands.



**The Mission Investment Fund (MIF)** is the lending ministry of the ELCA. MIF makes low-interest loans to ELCA congregations and ELCA-related ministries for building and renovation projects. With MIF loans, congregations and ministries can purchase property, construct new buildings, and expand or renovate existing facilities.

MIF loans expand the capacity for ministry. MIF loans help create expanded worship spaces, updated space for education and youth ministry, new kitchens for community meals, affordable housing units and much more.

At year-end 2019, MIF had 898 loans outstanding, totaling \$575.1 million.

To fund these loans, MIF offers a portfolio of investments for congregations, their members, synods and ELCA-related ministries to purchase. At year-end 2019, MIF investment obligations totaled \$493.4 million.

MIF is a financially strong and stable organization, with a record of steady, controlled growth. With total assets of \$712.3 million and net assets of \$211.9 million at year-end 2019, MIF maintains a capital ratio of 29.75 percent—positioning MIF in the top tier of well-capitalized church extension funds. For more information, visit [mif.elca.org](http://mif.elca.org).

#### **MIF loans and investments in the Pacifica Synod (as of December 31, 2019):**

- 19 Mission Investment Fund loans, with a balance of \$13,929,041
- \$10,505,205 in Mission Investment Fund investment obligations

#### **MIF representative:**

Joel S. Wudel, Regional Manager, Tel: 773-682-1765; email: [joel.wudel@elca.org](mailto:joel.wudel@elca.org)



PACIFIC LUTHERAN THEOLOGICAL SEMINARY

## Thank you for being a ministry partner!

We really appreciate all of the ways that you support us. Your prayers, gifts, and encouraging your leaders to consider a vocation in the church are three of the most important things your synod and congregation can do to support us and participate in our common mission to be church together for the sake of the world. PLTS is working hard to grow. We have a vision to provide theological education for more people, in more places, and in more ways. These are three of the exciting things happening at PLTS:

## Complete the Master of Divinity in Distributed Learning or Residential Format

*Choose Your Pathway:*

### 3 Years: The Fast-Track Pathway

The fast-track pathway is a compact, full-time, three year program of research-oriented, practical, and contextual learning. This includes 2 years of coursework and 1 year of full-time internship. Distributed learning students on this pathway will be on campus two to three times a year for Life and Learning Together Weeks.

### 4 Years: The Extended Pathway

The extended pathway is a full-time program of four years of research-oriented, practical, and contextual learning. This includes 3 years of coursework and 1 year of full-time internship. Distributed learning students on this pathway will be on campus two to three times a year for Life and Learning Together Weeks.

### 5 Years: The Flex Pathway

The flex pathway is a half-time program of five years of research-oriented, practical, and contextual learning. This includes 4 years of half-time coursework and 1 year of full-time internship. Distributed learning students on this pathway will be on campus two to three times a year for Life and Learning Together Weeks.

## Climate Justice & Faith Concentration

*Empowering leaders to cultivate moral, spiritual, and practical power for the work of climate justice in communities of faith. This concentration is designed for students interested in earth-honoring theology, ethics, spirituality, and practices that connect ecological well-being with racial, economic, and gender justice.*

This concentration prepares students to:

- Lead congregations in developing climate justice work
- Practice climate justice as a spiritual practice
- Address intersections of climate change with racial, economic, and gender-based inequity
- Articulate biblical, ethical, theological, and spiritual grounding for climate justice
- Employ scientific resources related to climate change
- Collaborate with interfaith and community partners

### **QUICK FACTS ABOUT PLTS**

- Number of PLTS Alumni: 1,633
- Number of MDiv Students: 37
- Number of TEEM Students: 50
- Number of MDiv Interns: 8
- Number of MA Students: 2
- Number of MDiv Graduates (2019): 10
- Number of TEEM Graduates (2019): 18
- Scholarships Awarded (2018-2019): \$383,951 to 100% of need-based qualifying students

## Master of Arts in Spirituality and Social Change

*Stay tuned for this brand new degree program coming in 2021!*

To learn more about PLTS, or to make a gift, visit [PLTS.edu](https://plts.edu).

# So You Can Embrace Every Day

PORTICO®  
Benefit Services | A Ministry of the ELCA

We are a church that takes care of each other. Portico Benefit Services is proud to continue a 200+ year Lutheran legacy of caring for those who serve, from pastors and their families to staff at social ministry organizations. As the ELCA's benefit ministry, seeing the diverse needs of our national church community drives us to innovate: to control health care costs and increase total well-being, to help plan members retire with confidence, to advocate on behalf of church organizations, and to serve more people well.

At Portico, we're inspired daily by those who commit to a life of service, and we're grateful to walk alongside our plan members — providing benefits designed to help you embrace every day.



**The Rev. Jeff Thiemann**  
President & CEO

## Church Benefits Making a Difference

**65%**

### Members Preparing for the Future\*

by making their own pretax retirement contributions during 2019 in addition to the contributions from their sponsoring organization.

**10,648**

### Pounds Lost\*

by ELCA-Primary health plan members since 2018, when we added a chronic condition management program by Omada® to help reduce the risk of type 2 diabetes and heart disease.

**1,728**

### New Members Welcomed

to Portico's benefit plans in 2019 when we added three ELCA social ministry organizations.

**3**

### Pro-Church Bills

enacted into federal law in 2019 thanks to Portico working alongside other denominations to advocate for legislation favorable to church benefit plans.

**605**

### Members Made the Leap

into retirement in 2019. Over 80% of ELCA retirees report feeling financially prepared for this next chapter of their lives. Well done!

**65%**

### Members Being Proactive

with their health by using ELCA-Primary preventive services in 2019.

**70%**

### Members With Diabetes See Improvement

in their ability to manage their condition due to participation in our Livongo® Diabetes Management program.

**1,297**

### Additional Students

attending schools in low-income Midwestern communities thanks in part to a social purpose fund investment.

**96%**

### Users Satisfied\*

or very satisfied with their experience on Portico's member and employer websites.



*This page is intentionally left blank*